



2009 John Deere 9630T, 2 – 2013 John Deere 9510RT & 2014 John Deere 8335RT

**rb RITCHIE BROS.**  
Auctioneers®

# Lethbridge, AB

July 20, 2017 (Thursday)

Unreserved public auction



Mesabi Ranches Inc.

2 – 2012 John Deere 290G LC



Mesabi Ranches Inc.

2012 John Deere 772G



Blake & Lisa Robinson

2009 New Holland T9040HD  
& 2012 New Holland P2050 46 Ft w/P1060



Featuring a large line-up of late model, low hour  
Case IH equipment from Western Tractor & Cervus Equipment

1 of 2 – 2016 Case IH Magnum 340, 2013 Case IH 550,  
2015 Case IH Patriot 4440 120 Ft, 1 of 8 – 2015 Case IH 8240 & 2015 Case IH WD1204 25 Ft

# Lethbridge, AB

July 20, 2017

Thursday 8:00 am

Phone: **403.327.4933**

Fax: 403.327.4243

Auction location: SE 5-8-20 W4, Intersection of Hwy 4 & Hwy 508, Lethbridge, AB

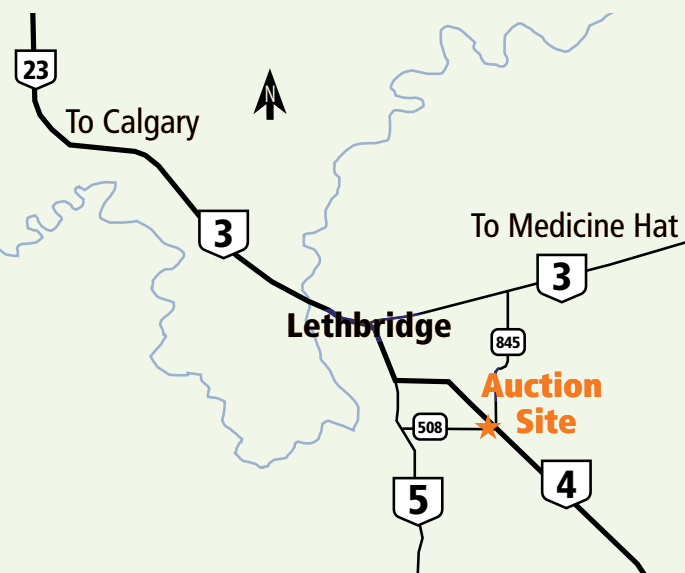
## 725+ items & counting

Bid in person or online

On-site registration starts: **July 17 (Monday)**

Items must be removed by: **July 28 (Friday)**

Auction company license #303043



GPS coordinates:

49° 36.885 N, 112° 40.324 W



2009 John Deere 9630T & 2012 J&M 1401

### Auction highlights

Complete Dispersal:

**5-G Farms Ltd.**

**Blake & Lisa Robinson**

**Russ & Linda Thompson**

**Alberta Plumbing Depot Ltd.**

**J W Feltin Heating & Air Conditioning Ltd.**

**Tycas Energy Ltd.**

Equipment From:

**Western Tractor**

**Cervus Equipment**

**Hat Agri Services**

**Mesabi Ranches Inc.**

**Brian G Hildebrand Farms Ltd.**

**K J Trucking 1996 Ltd.**

**County of Fourty Mile No 8**

**Romer Environmental Ltd.**

**Peggy Mclean**

Visit [rbauction.com](http://rbauction.com) for complete auction information



Full equipment listings, more photos and detailed equipment information



New additions to each auction – items added daily!



Deposit and payment information, including financing, wire transfer accounts and taxes



Full auction schedule, with times and lot numbers



Maps, hotels and other local services

### Auction notes

- ▶ Every item is sold 'as is, where is'
- ▶ International and online bidders – you may need to place a refundable deposit before you bid – check the auction details on our website for more information

An administrative fee will be charged on every lot purchased: 2.5% on lots selling for more than \$2,500, up to a maximum of \$950 per lot; 10% on lots selling for \$2,500 or less.

### Directions to auction site

**From Lethbridge, AB:** at the intersection of 43rd Street and Hwy 4, go 10.5 km (6.5 miles) Southeast on Hwy 4 to Secondary Hwy 508, yard on West side of the road.



2 – 2013 John Deere 9510RT



2014 John Deere 8335RT – *Low Hours*



1 of 2 – 2013 Case IH 550



2012 Case IH 500



2011 Case IH 535



2009 New Holland T9040HD



1998 John Deere 9200



2 – 2016 Case IH Magnum 340 – *Low Hours*



2 – 2016 Case IH Magnum 240 – *Low Hours*



2016 Case IH Magnum 220 – *Low Hours*



2014 Case IH Magnum 340 – Low Hours



2014 Massey Ferguson 8680 – Low Hours



2009 Case IH Puma 165



2006 Case IH MXM120 Pro



2004 Massey Ferguson 7475



1 of 8 – 2015 Case IH 8240 – All w/Low Hours



2013 New Holland CR8090 – Low Hours



2013 John Deere S680



1 of 2 – 2013 Case IH 8230



2014 & 1 of 2 – 2013 Case IH 8230



2012 Massey Ferguson 9560



2012 Claas Lexion 6700



2008 New Holland CX8080



2008 Massey Ferguson 9895



2008 Case IH 7010



2003 New Holland CR940



2 – 2005 & 2 of 3 – 2004 Case IH 8010



2013 MacDon M155 – Low Hours & 2013 D65-S 30 Ft



2015 Case IH WD1204 25 Ft – Low Hours



2013 Case IH WD1203 30 Ft



2012 Challenger WR9760 30 Ft



2012 Massey Ferguson WR9740 30 Ft – Low Hours



2002 Premier 2952 25 Ft



1999 Premier 2930 35 Ft



2 – 2014 Case IH 3162 45 Ft



2011 Claas MaxFlo 1200 40 Ft & Horst Welding CHCFSP



2 of 9 – Honey Bee SP36



2 of 3 – John Deere 640D



2 of 4 – John Deere 635D



2015 Case IH Patriot 4440 120 Ft



2012 Case IH Patriot 4430 120 Ft



2011 Case IH Patriot 4420 120 Ft



2010 Rogator 1386 120 Ft



2012 Case IH RB564



2004 Hesston 956A



2012 Highline CFR650



2008 Highline Bale Pro 8100



2012 Brandt 7500HD & 2012 Brandt 5200EX



2012 Pro 1210



Haystorm 2000



2013 Horch Anderson Panther 460 60 Ft w/500i



2012 New Holland P2050 46 Ft w/P1060



2009 Case IH Flex Hoe 700 71 Ft w/3430



2005 Flexi-Coil 5000HD 57 Ft & 2008 Case 3430  
& 2002 Flexi-Coil 5000HD 57 Ft & 2006 Case 3430



2 - John Deere 1910



Bourgault 7200 80 Ft



Brandt 5000 50 Ft



Rite Way 46 Ft



2005 Bourgault 1100



2008 Doepker



2008 Lode King



2010 John Deere 450DLC



2006 John Deere 330C LC



2005 John Deere 230CLC



2008 John Deere 772D



1998 Caterpillar IT28G



2006 JCB 541



2014 John Deere 329E 2-Speed



2006 Tigercat LX830



2005 Northern Office Unit – Selling Off-site



2007 Peterbilt 379



2005 Peterbilt 379



2004 International 9900i



2000 Peterbilt 379



2006 International 7400



2002 International 7500



2007 Sterling L9500 15900 Litre & 1997 Wabash 19500 Litre



2006 International 9900i 15900 Litre & 2001 Advance 15900 Litre



2012 International TerraStar 12 Ft



1995 Western Star 4964F



2002 International 4400



2004 Sterling LT8500



2006 GMC C5500 w/Ferrari 560



2007 Merritt 53 Ft



1992 Midland 30 Ft



2014 Doepker HB16699L

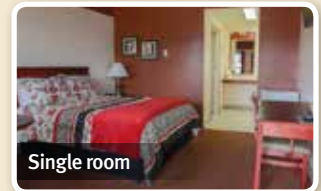
## Real estate selling in this auction



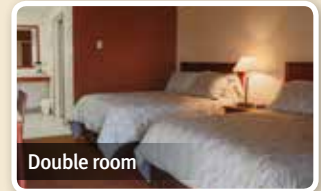
**1358448 Alberta Ltd.  
Stage Coach Inn – 16 Unit Motel - Duchess, AB**

**103 Centre St.**

- ▶ 3000± sq ft reception & manager's residence building
- ▶ On 2 titles
- ▶ 2009 built 16 room motel
- ▶ 8 double rooms  
4 with kitchenettes
- ▶ 7 single rooms  
3 with kitchenettes
- ▶ 1 wheelchair accessible room



Single room



Double room

Jerry Hodge - Ritchie Bros. Real Estate: 780.706.6652  
Brokerage: All West Realty Ltd.



**Little S Ltd. – Duchess, AB  
4 Bay Commercial Strip Mall**

**108/114 Centre St.**

- ▶ 2007 built 4000± sq ft building
- ▶ (4) 1000± sq ft bays
- ▶ Separate heating & A/C, hot water tank & bathroom
- ▶ All 4 bays rented



**View by Appointment:  
Contact the Motel Manager  
403.378.3001**

Jerry Hodge - Ritchie Bros. Real Estate: 780.706.6652  
Brokerage: All West Realty Ltd.

For details visit: [rbauction.com/realestate](http://rbauction.com/realestate)



**2011 GMC 2500HD & 2003 Glendale Titanium 34 Ft**

## Equipment listings

### Agricultural

**BELTED TRACTORS:** 2009 John Deere 9630T · 2- 2013 John Deere 9510RT · 2014 John Deere 8335RT · 2- 2013 Case IH 550 · 2011 Case IH 535 · 2012 Case IH 500.

**4WD TRACTORS:** 2009 New Holland T9040HD · 1998 John Deere 9200.

**MFWD TRACTORS:** 2- 2016 & 2014 Case IH Magnum 340 · 2- 2016 Case IH Magnum 240 · 2016 Case IH Magnum 220 · 2014 Massey Ferguson 8680 · 2004 Massey Ferguson 7475 · 2006 Case IH MXM120 PRO Tractor · 2009 Case IH Puma 165 · John Deere 4550.

**BI-DIRECTIONAL TRACTOR:** 1990 Versatile 276.

**2WD TRACTOR:** 1966 Massey Ferguson 1100.

**UTILITY TRACTOR:** 2003 Kubota B7500D MFWD.

**SPRAYERS:** 2015 Case IH Patriot 4440 120 Ft High Clearance · 2012 Case IH Patriot 4430 120 Ft High Clearance · 2011 Case IH Patriot 4420 120 Ft High Clearance · 2010 Rogator 1386 120 Ft High Clearance · 2010 New Holland S1070 132 Ft Field · 2005 New Holland SF115 80 Ft Field · Flexi-Coil 62 70 Ft Pull Type · John Deere 40 Ft Truck.

**SWATHERS:** 2013 MacDon M155 · 2015 Case IH WD1204 25 Ft · 2012 Massey Ferguson WR9740 35 Ft · 2012 Challenger WR9760 30 Ft · 2013 & 2011 Case IH WD1203 30 Ft · 2002 Premier 2952 25 Ft · 1999 Premier 2930 35 Ft · 2000 Haystorm Ind Transport · Custom Built T/A Transport · Case IH 8230 30 Ft Pull-Type.

**COMBINES:** 8- 2015 Case IH 8240 · 2014 & 2-2013 Case IH 8230 · 2013 New Holland CR8090 · 2013 John Deere S680 · 2012 Massey Ferguson 9560 · 2012 CLAAS LEXION 670 · Massey Ferguson 8450 · 2008 Case IH 7010 · 2008 New Holland CX8080 · 2-2005, 3-2004 & 2003 Case IH 8010 · 2001 John Deere 9650STS · 2003 New Holland CR940 · John Deere 9500 · 2000 Case IH 2388 · 2-1995 Case IH 2188 · 1984 International 1480 · 2008 Massey Ferguson 9895 · Gleaner R60 · Gleaner R6.

**HEADERS:** 2- 2014 Case IH 3162 45 Ft Terra Flex · 2013 · 2012 & 2011 John Deere 640D 40 Ft Draper · 2011 Claas MaxFlo 1200 40 Ft Draper · Horst Welding CHCFSP 40 Ft Header Transport · AG Shield Yield Shield 36 Ft · 2003 John Deere 936D 36 Ft Draper · New Holland 94C 36 Ft Draper · Honey Bee 94C · 2012 Bergen 3600HT Header Transport · 2011 Case IH 2332 30 Ft Swather · 2- Case IH 2212 20 Ft 11 Row Corn · 2011 Case IH 2142 35 Ft Flex Draper · 2010 Case IH 2020 35 Ft Draper · Case IH 1010 30 Ft · 2- Case IH 1010 30 Ft Rigid · Hesston 3 Row Corn · Honey Bee 994 30 Ft · 2009 Honey Bee 94C 36 Ft Draper

· Honey Bee 94C 30 Ft Draper · 2009 Honey Bee SP36 36 Ft Draper · 7- Honey Bee SP36 36 Ft Draper · Honey Bee SP25 25 Ft Draper · AGCO 400 30 Ft Draper · International 810 24 Ft Rigid · 2- 2010 & 2- 2009 John Deere 635D 35 Ft Draper · John Deere 230 30 Ft Rigid · John Deere 230 Draper · 2013 MacDon D65-S 30 Ft Draper · New Holland RI600 18 Ft Forage · 2- Header Transport.

**AIR DRILLS:** 2013 Horsch Anderson Panther 460 60 Ft · 2012 New Holland P2050 46 Ft · 2009 Case IH Flex Hoe 700 71 Ft · 2005 & 2002 Flexi-Coil 5000HD 57 Ft · 2003 Flexi-Coil 5000 57 Ft · 2- Flexi-Coil 5000 39 Ft · 2- 2009 John Deere 1910 Air Tank · 1996 John Deere 737 30 Ft.

**SEED DRILLS:** Melroe 282 32 Ft · International 7100 24 Ft · International 150.

**CULTIVATORS:** Friggstad B331 34 Ft · Friggstad 35 Ft · Morrison B3-36 Rodweeder · 1984 Versatile 5000 35 Ft V Plow.

**DISCS:** 2012 John Deere 2623VT 36 Ft 5 In. Vertical.

**PLOWS:** Custombuilt 10 Ft.

**HARROW BARS & PACKERS:** Bourgault 7200 80 Ft Harrows · Brandt 5000 50 Ft Heavy Harrows · Flexi-Coil 85 50 Ft Heavy Harrows · Flexi-Coil 60 Ft Harrow Packer · Rite Way 46 Ft Land Roller · Summers 50 Ft Heavy Harrows.

**BALERS:** 2012 Case IH RB564 Round · 2010 New Holland BB9080 3x4 · 2004 Hesston 956A Round · John Deere 567 Round · John Deere 535 · 1999 New Holland 688 Round · 1984 New Holland 855 Round.

**LIVESTOCK EQUIPMENT:** Custombuilt 2500 Gallon Liquid Manure Spreader · 2008 Highline Bale Pro 8100 Bale Processor · 2012 Highline CFR650 Bale Processor · Kuelker Feed Wagon · New Holland 352 Mix Mill · Oswalt U1256 Feed Wagon.

**SPREADERS:** New Holland 790 T/A Manure Spreader · Kirby Chaff · Valmar 2420 · Valmar Airflow Implement Mounted.

**BREAKING EQUIPMENT:** Degelman R570H Rock Picker.

**MOWER CONDITIONERS:** 2012 AGCO 9191 16 Ft Header · New Holland 2331 13 Ft Header · New Holland 495 12 Ft · New Holland 114 12 Ft Hydra Swing.

**MOWERS:** Alamo Flail · John Deere 503 62 In. · 2008 John Deere Edge 54C 54 In. Deck · 54C 54 In. Deck · John Deere 48HD 48 In. Deck · New Holland MZ16H 40 In. Mower Tractor.

**FORAGE HARVESTERS:** Hesston 7500 Pull Type · JF FCT1350.

**HAYING EQUIPMENT:** Monroe 6 Round Bale Accumulator · 2002 Fella Werke 22 Ft 2 Pt Hitch Hay Rake · Inland Hayliner 4000 Bale Stacker · Inland Hayliner 14 Hydraulic Bale Mover · Miller Pro Hay Rake · 16-64 In x 8000 Ft Net-wrap.

**GRAIN CARTS:** 2012 J&M 1401 · 2005 Bourgault 1100.

**GRAIN BINS:** Westeel 2405 7800± Bushel · 2- Westeel Roscco 1500± Bushel Hopper Bin · 3- Westeel Roscco 196 4091± Bushel · 2- Westeel Roscco 194 2882± Bushel – TO BE SOLD OFF-SITE.

**GRAIN HANDLING EQUIPMENT:** 12 In. x 34 Ft Electric Fertilizer Conveyor · 3- Hopper Auger · Brandt 20110 Grain Conveyor · 2012 Brandt 7500HP 10 In. Grain Vac · 2012 Brandt 5200EX Grain Vac · 2012 Brandt 1390HP Mechanical Swing Grain Auger · 2013 Brandt 1040 Self-Propelled Grain Auger · Brandt 1035 Self-Propelled Grain Auger · 2013 Brandt 847 Self-Propelled Grain Auger · Brandt Grain Deck 12 In. x 20 Ft Grain Conveyor · Custombuilt Two Hopper Drill Fill · 2011 Farm King 1395 Mechanical Swing Grain Auger · Farm King 13 Ft x 90 Ft Mechanical Swing Grain Auger · Farmking 1385 Grain Auger · Gustafson 6 Portable 3 Tier Grain Cleaner · 2013 Kwik Kleen 750 BPH Grain Cleaner · NuVision GrainMaxx 4385 13 In. x 85 Ft Telescopic Mechanica Grain Auger · 2012 Pro 1210 Portable Grain Bagger · 2011 Sakundiak TL12-1200 39 Ft Self-Propelled Grain Auger · Sakundiak HD8-1800 8 In x 59 FT Grain Auger · Strong Scott 12x30 Moblie Seed Cleaner · Twister 8 In. Incline Power Head · Westfield UB816 8 In x 16 Ft tube · Westfield UB816 8 In. x 25 Ft Transfer Auger · 2009 Westfield TR100-36 10 In. x 36 Ft Grain Auger · 2- Westfield W80-51 Grain Auger · Wheatheart BH1041 Self-Propelled Grain Auger.

**PRECISION FARMING:** 2016 & 2015 John Deere GS3 2630 GPS Display · Outback S GPS Display · Sidewinder GPS Receiver.

### Construction

**CRAWLER TRACTORS:** 2012 John Deere 850J WLT · 1953 International TD9.

**WHEEL LOADER:** 1998 Caterpillar IT28G · 1980 Case W11.

**MULTI TERRAIN LOADER:** 2014 John Deere 329E 2 Spd High Flow.

**MOTOR GRADERS:** 2012 John Deere 772G AWD · 2008 John Deere 772D AWD.

**MOTOR SCRAPER:** 1980 Terex TS14.

**HYDRAULIC EXCAVATORS:** 2010 John Deere 450D LC · 2006 John Deere 330CLC · 2- 2012 John Deere 290G LC · 2005 John Deere 230LC · 2001 John Deere 230CLC · Mitsubishi MS180.

**FELLER BUNCHER:** 2006 Tigercat LX830 Tilter.

**ARTICULATED DUMP TRUCK:** 2007 John Deere 300D.

**LOADER BACKHOE:** 1979 Case 580C.

**TOW BEHIND ROLLER:** VULCA-TAMP 10 Ft Double Drum Sheepsfoot Compactor.

**TELESCOPIC FORKLIFTS:** 2006 JCB 541-70 Agri-super · LULL Corp. MLULL 10K 4x4.

**PATCHER:** Rosco Hot Patch Trailer T/A Patcher.

**PULL SCRAPER:** 1965 Caterpillar 70 14 CY Hydraulic.

### Transportation

**TRUCK TRACTORS:** 2012 Kenworth T800 Sleeper T/A · 2007 & 2005 Peterbilt 379 Sleeper T/A · 2004 International 9900I Sleeper T/A · 2002 & 2000 Peterbilt 378 T/A.

**DUMP TRUCKS:** 1993 International 9000 T/A · 2006 International 7400 T/A · 2002 International 7500 T/A.

**TANK TRUCKS:** 2007 Sterling L9500 16000 Litre T/A · 2006 International 9900i 16000 Litre T/A.

**BOOM TRUCK:** 1994 GMC Topkick S/A w/Hiab 125.

**BUCKET TRUCK:** 1998 Chevrolet 3500 HD.

**VACUUM TRUCK:** 1995 Western Star T/A Hydro.

**MECHANICS TRUCK:** 2006 GMC 5500 4x4.

**UTILITY TRUCK:** 2004 Chevrolet 2500HD Extended Cab.

**VAN TRUCKS:** 2006 GMC 3500 · 2006 & 2001 Chevrolet 3500 · 1999 GMC 2500 · 2005 Chevrolet 1500 · 2005 Chevrolet Astro Cargo.

**GRAIN TRUCKS:** 2004 Sterling LT8500 T/A · 2002 International 4400 6x4 · 1995 International 2654.

**LIVESTOCK TRUCK:** 2010 Ford F350 Crew Cab 4x4 Feed Truck.

**FLATBED TRUCKS:** 1985 Kenworth W900B T/A · 2011 International TerraStar · 1996 GMC Top Kick Lo Pro S/A · 2002 Ford F450 4x4 · 2001 Dodge 3500 4x4 Dually · 2001 Dodge 3500 Extended Cab 4x4 Dually · 1996 Chevrolet 3500 Extended Cab Dually · 1996 Dodge 2500 4x4.

**EMERGENCY VEHICLE:** 1983 Ford F800 Fire Truck.

**PICKUPS:** 2007 Chevrolet 3500 Crew Cab · Dodge 2500 Crew Cab · Dodge 2500 Quad Cab 4x4 · 2012 Dodge 1500 Crew Cab 4x4 · Dodge 1500 4x4 · Dodge 1500 Extended Cab 4x4 · Ford F250 · Ford F250 4x4 · Ford F250 Extended Cab 4x4 · Ford F250 Quad Cab 4x4 · 2009 Ford F150 Crew Cab 4x4 · 2 · Ford F150 Extended Cab 4x4 · 2011 GMC 2500HD Extended Cab 4x4 · 2010 Chevrolet 1500 Crew Cab · Chevrolet 1500 4x4.

**BUSES:** 2013 Ford E350 12 Passenger · 2013 Ford 11 Passenger · 2011 GMC 11 Passenger.

**AUTOMOBILES:** 2005 Dodge Grand Caravan Minivan · GMC 3500 · 2006 Volkswagen Jetta.

**SUPER B-TRAIN HIBOY:** 2014 Doepker HB16699L

**BOTTOM DUMP TRAILERS:** 2015 Custombuilt · 1992 Midland 30 Ft T/A.

**END DUMP TRAILERS:** 1990 Arnes Trombone 28 Ft Tridem · 2003 JP 26 Ft Quad/A Aluminum.

**CAR HAULER TRAILER:** 2017 Load Trail 18 Ft T/A.

**STOCK TRAILERS:** 1993 Southland T/A Horse · 1984 King Of The Road 26 Ft Gooseneck Horse.

**GRAIN & SILAGE TRAILERS:** 2008 Doepker 29 ft Pup T/A Grain · 2008 Doepker 27 ft Lead Grain · Jiffy T/A High Dump Silage.

**VAN TRAILERS:** 2004 Homemade 12 Ft S/A Enclosed · 2008 Interstate ILRD612TA2 12 Ft T/A · 2006 Manac 27 Ft S/A · 1995 Trailmobile 53 Ft T/A.

**TANK TRAILERS:** 2001 Advance 16000 Litre T/A · 1997 Wabash 16000 Litre T/A.

**TRAILERS:** 2012 Doolittle 27 Ft T/A Gooseneck · 2002 Norbert 25 Ft T/A Gooseneck · 2003 Homesteader Hercules 20 Ft T/A Enclosed Utility · 2011 Falcon 14 Ft S/A · 1997 Gordson 12 Ft Utility · 2007 Landoll 660B-48 48 Ft T/A Rollback · 2004 Royal 8 Ft S/A.

## Other items of interest

**MOBILE STRUCTURES:** 51 Ft Continuous Span Steel Mobile · Northern Trailer Office Unit · Selling off-site.

**OTHER ITEMS INCLUDE:** Electric Forklifts · Scissorlifts · Irrigation Equipment · Quads · Utility Vehicle · Travel Trailer · Motor Home · Boats · Landscape Equipment · Livestock Equipment · Snow Equipment · Miscellaneous Agricultural Equipment · Attachments · Air Compressors · Light Generator Sets · Light Towers · Welders · Pumps · Tanks · Shipping Containers ...AND MUCH MORE!

Advance notice

# Lethbridge, AB December 5, 2017 (Tue)

403.327.4933

Mesabi Ranches Inc.



2— 2015 Claas Lexion 760

Mesabi Ranches Inc.



2016 Versatile 500 & 1 of 2— 2012 Bourgault 3320PHD 50 Ft w/6550

Cervus Equipment



2012 Bourgault 3320PHD XTC 76 Ft w/7950

Mesabi Ranches Inc.



2017 Versatile 450 & 2004 Brent 1084


Mesabi Ranches Inc.



2013 Case IH Patriot 3330 100 Ft

# 3D Farms JV

## Grassy Lake, AB

 **Sale Starts 9 am** – Registration Begins Wednesday, July 12 at 9 am  
Internet Bidding Begins at **9 am**



**Jordan Lightbown**  
Ritchie Bros. Territory Manager  
403.502.4691  
jlightbown@rbauction.com

**Egbert Schutter:** 403.393.2418

**Onno Mellema:** 403.360.2549

**Jake Schutter:** 403.502.9003

**Directions:** From **GRASSY LAKE, AB**, go south 10.9 km (6.8 miles) on Hwy 877, then go east 1.6 km (1 mile) on Twp Rd 92, then go south 2.5 km (1.56 miles) on Range Rd 132. Yard on West Side.  
**GPS:** 49.7050000, -111.6761500



2— 2014 John Deere S670 – GPS Sold Separately



2010 John Deere 9630T & 2012 John Deere 9560RT



2008 & 2— 2006 John Deere 8430 – GPS Sold Separately



1999 & 1998 John Deere 7810



2010 Premier M150 25 Ft



2015 John Deere R4038 120 Ft



2008 John Deere 1890 42 Ft w/1910



2016 Pickett Twin Master 18 Ft



2— 2014 Spudnik 6640 4 Row



2— Kverneland 3300 6 Row



2013 John Deere 244J



2013 John Deere 332E



2014 Kubota KX057-4



2016, 2013 & 2010 Kenworth T370 & 2— 2006 & 2— 2004 Kenworth T300

Grassy Lake, AB - July 13, 2017

Advance notice

# Vegreville, AB August 10, 2017 (Thur)

800.491.4494

Auction company license #309645

Mark Land & Cattle Corp



2015 John Deere S680 - Low Hours

Silver Creek



2013 Lexion 770

Webb's Machinery



2013 New Holland CR8090

Webb's Machinery



2011 John Deere 9770STS

Jimco Farming Inc.



2010 John Deere 9870STS

Mark Land & Cattle Corp



2012 Challenger MT875C - Low Hours & 2011 Bourgault 3310 40 Ft w/6350

Kuku Farms Ltd.



2013 Case IH Steiger 450HD - Low Hours & Unused- 2015 Case IH True Tandem 370 34 Ft

Mark Land & Cattle Corp



2014 John Deere W150 30 Ft

Webb's Machinery



2013 New Holland SP.365F 120 Ft

Webb's Machinery



2013 New Holland 880CF 40 Ft

Western Tractor



2 – 2016 Case IH Magnum 340, 2 – 2016 Case IH Magnum 240 & 2016 Case IH Magnum 220 – All w/Low Hours

Western Tractor



2 – 2013 Case IH 550, 2011 Case IH 535 & 2012 Case IH 500

Cervus Equipment



5 of 8 – 2015 Case IH 8240 – All w/Low Hours

Mesabi Ranches Inc.



2007 John Deere 300D

Mesabi Ranches Inc.



2012 John Deere 850J WLT

SPECIAL LIMITED-TIME FINANCING OFFER  
**NO PAYMENTS**  
FOR  
**90 DAYS\***

Apply today at [rbauction.com/financing](http://rbauction.com/financing)

\*OAC. Terms and conditions apply.

» Visit our website for complete and up-to-date listings for this auction at

[rbauction.com](http://rbauction.com)

Lethbridge, AB | July 20, 2017 (Thursday)

[rbauction.com](http://rbauction.com)

**rb RITCHIE BROS.**  
Auctioneers®